

SOUNDFIT™ Config User's Manual

Information Note

Contents

- 1. Introduction 2
 - 1.1 Software Requirements 2
- 2. Instructions 3
 - 2.1 Select the product 3
 - 2.2 Select the programmer that you wish to use 3
 - 2.3 Select how to handle the volume control calibration 3
 - 2.4 Configure the device 3
- 3. Memory Configuration 4
 - 3.1 Foundation 4
 - 3.2 Duet and Venture 4
- 4. Revision History..... 5

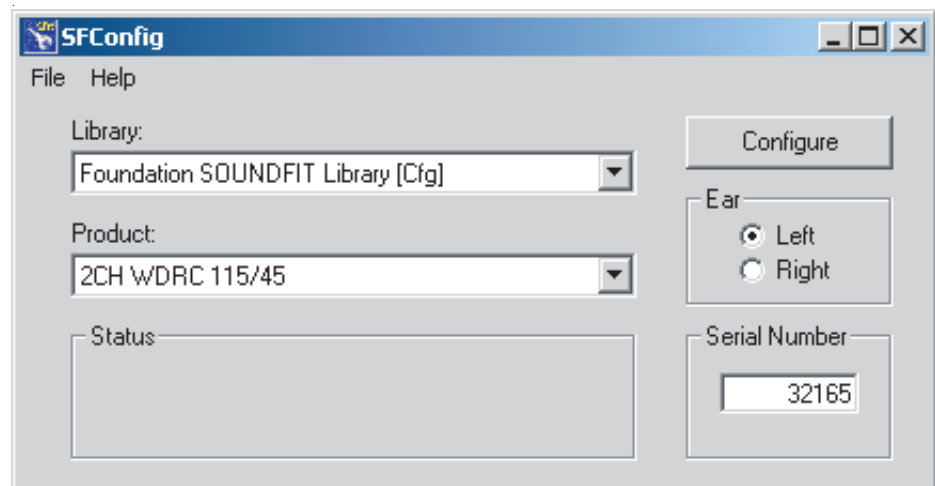
1. Introduction

The SOUNDFITConfig utility configures Venture™, Foundation® and Duet™ devices with product libraries that are compatible with Gennum's SOUNDFIT fitting software through any standard programming box such as HiPro or Gennum's DSP Programmer.

When a hybrid leaves Gennum, it is programmed with a generic configuration. In order to program the hybrid with a specific set of parameters and features, the hearing aid manufacturer configures the hybrid with a new product library configuration. To be usable in SOUNDFIT™, each hybrid must be programmed with a SOUNDFIT compatible configuration.

You can use the libraries installed with SOUNDFIT™ or, if the SOUNDFIT Customization Tool has been purchased, you may use your own custom libraries created in ARKonline.

This information note guides you through the process of configuring a hybrid with a new product library.



1.1 Software Requirements

Install **ARKBase™** Version 4.0.0 or newer on your PC.

*For a free download of **ARKBase** visit www.gennum.com/hip/software.

2. Instructions

Brief explanation of how to configure the device (select product and programmer) and how to handle volume control calibration.

2.1 Select the product

Select the library that contains the product that you wish to program into the device. Selecting a library updates the product field with all products compatible with SOUNDFIT within the library.

The product field displays a message '**No SOUNDFIT Compatible Products**' if no compatible products are available within the selected library.

2.2 Select the programmer that you wish to use

1. Under the **File** menu, select **Set Programmer**; which displays a dialog box with all programmers currently installed on your computer.
2. To return to the main application, click on **Ok**

2.3 Select how to handle the volume control calibration

1. Under **File**, select **VC Settings**.
2. If you are working with a Venture product, select **External Volume Control** check box if present on the hearing aid to be configured
3. If you are working with a Venture or a Foundation product, indicate the type of **Volume Control** present on the hearing aid, by clicking **2** or **3 Terminal Trimmer**.
Note: A Duet product must use a two (2) terminal trimmer.

2.4 Configure the device

1. In the application window, click the appropriate Ear Port for the connection between the hearing aid and the programming box.
2. In the **Serial Number** box type the serial number, if applicable.
3. To configure the device, click **Configure**.
4. The **Status** area displays '**Configuration Complete**' at which time the hearing aid can be disconnected from the programmer and another device can be configured.

3. Memory Configuration

3.1 Foundation

If the product library specifies two memories, the software configures **Memory A** as 'Normal' operation and **Memory B** for telecoil use.

3.2 Duet and Venture

The software configures the device with **Memory A** as valid and the other three memories as Invalid unless telecoil is present in the product library. If telecoil is present in the product library, the software configures **Memory A** for normal microphone operation and the software configures **Memory B** for telecoil operation.

4. Revision History

Version	ECR	Date	Changes and / or Modifications
0	134065	June 2004	New document.
1	135910	February 2005	Updates.

CAUTION

ELECTROSTATIC SENSITIVE DEVICES
DO NOT OPEN PACKAGES OR HANDLE
EXCEPT AT A STATIC-FREE WORKSTATION



DOCUMENT IDENTIFICATION

INFORMATION NOTE

Information relating to this product and the application or design described herein is believed to be reliable, however such information is provided as a guide only and Gennum assumes no liability for any errors in this document, or for the application or design described herein. Gennum reserves the right to make changes to the product or this document at any time without notice.

GENNUM CORPORATION

Mailing Address: P.O. Box 489, Stn. A, Burlington, Ontario, Canada L7R 3Y3
Shipping Address: 970 Fraser Drive, Burlington, Ontario, Canada L7L 5P5
Tel. +1 (905) 632-2996 Fax. +1 (905) 632-5946

GENNUM JAPAN CORPORATION

Shinjuku Green Tower Building 27F, 6-14-1, Nishi Shinjuku, Shinjuku-ku, Tokyo, 160-0023 Japan
Tel. +81 (03) 3349-5501, Fax. +81 (03) 3349-5505

GENNUM UK LIMITED

25 Long Garden Walk, Farnham, Surrey, England GU9 7HX
Tel. +44 (0)1252 747 000 Fax +44 (0)1252 726 523

Gennum Corporation assumes no liability for any errors or omissions in this document, or for the use of the circuits or devices described herein. The sale of the circuit or device described herein does not imply any patent license, and Gennum makes no representation that the circuit or device is free from patent infringement.

GENNUM and the G logo are registered trademarks of Gennum Corporation.

© Copyright 2004 Gennum Corporation. All rights reserved. Printed in Canada.

www.gennum.com